



FOR LEASE

# Golf Sumac Medical Offices

9301 West Golf Rd, Des Plaines, IL 60016

eXp Commercial | 939 W North Ave | Chicago, IL 60642 |

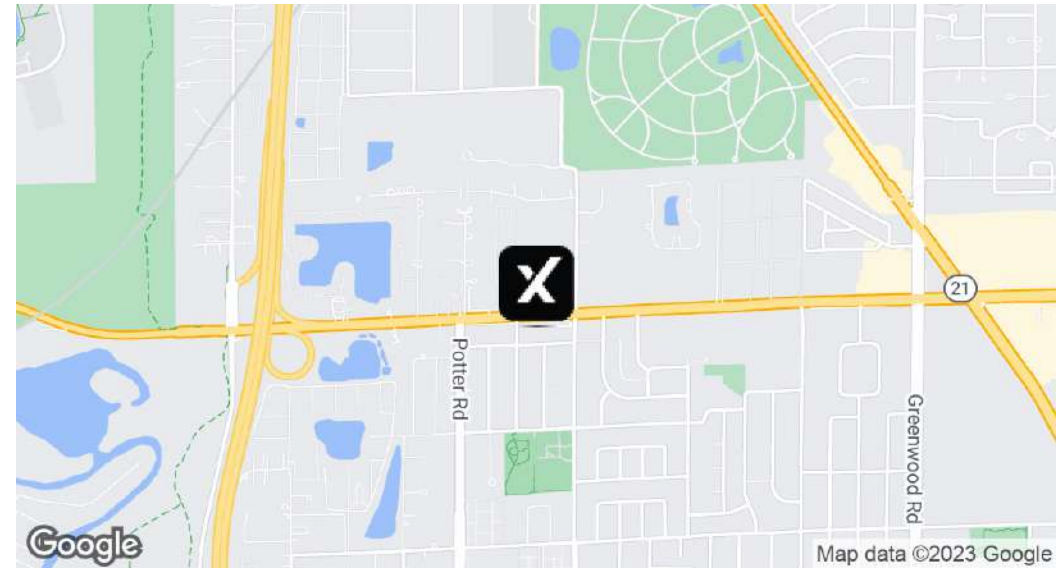
**Randolph Taylor MBA, CCIM**

630.474.6441

[randolph.taylor@expcommercial.com](mailto:randolph.taylor@expcommercial.com)

# FOR LEASE | Golf Sumac Medical Offices

9301 West Golf Rd, Des Plaines, IL 60016



## Offering Summary

Lease Rate:	\$28.00 SF/yr (MG)
Building Size:	35,245 SF
Available SF:	998 - 2,853 SF
Lot Size:	2.25 Acres
Year Built:	1980
Renovated:	2019
Zoning:	Office
Market:	Chicago
Traffic Count:	34,295

## Property Overview

eXp Commercial is proud to present For Lease Golf Sumac Medical Offices in Des Plaines, IL. This prominent property is ideally located less one-half of a mile from Interstate 294 and Milwaukee Avenue and less than five minutes from Advocate Lutheran General Hospital. Tenants include NorthShore University Health Systems, Midwest Center for Women's Healthcare, Golf Glen Dentistry, Optimum Physical Therapy, and Allergy Partners of Chicago.

This three-story 35,245 Square Foot Medical Office building is situated on a two and one half acre lot offering an abundance of parking with two entrances and multiple visitor spots adjacent to the front entrance. The building's exterior, interior common areas, and most suites have undergone significant modernization within the past 3 years. Available Medical Office suites range from approximately 1,000 to 3,000 rentable square feet.

## Property Highlights

- 5 Min Advocate Lutheran General Hospital
- Professional Medical Office Building
- Renovated Common Areas
- Monument Sign Positioning

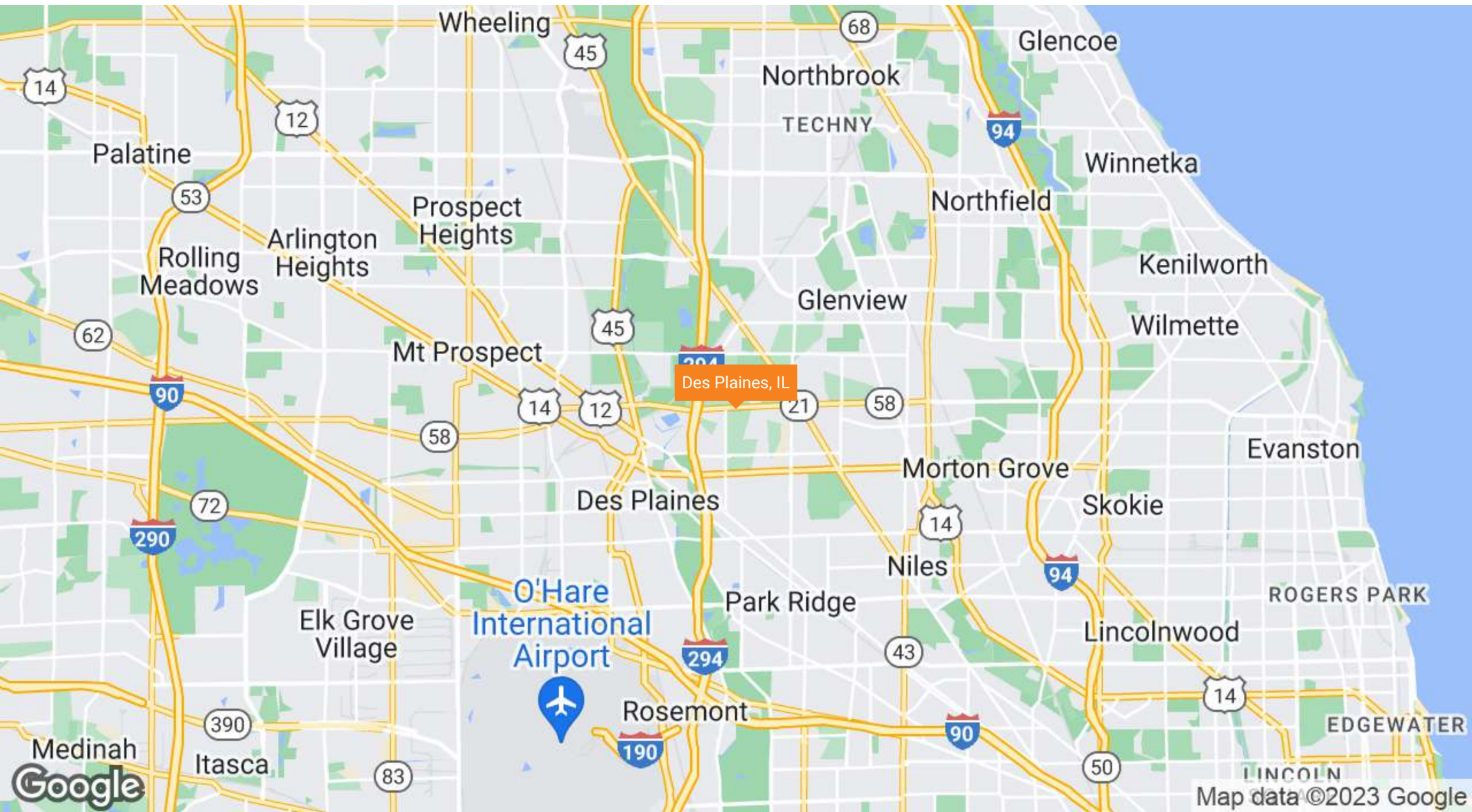
## Randolph Taylor MBA, CCIM

630.474.6441  
randolph.taylor@expcommercial.com



# FOR LEASE | Golf Sumac Medical Offices

9301 West Golf Rd, Des Plaines, IL 60016



Randolph Taylor MBA, CCIM

630.474.6441

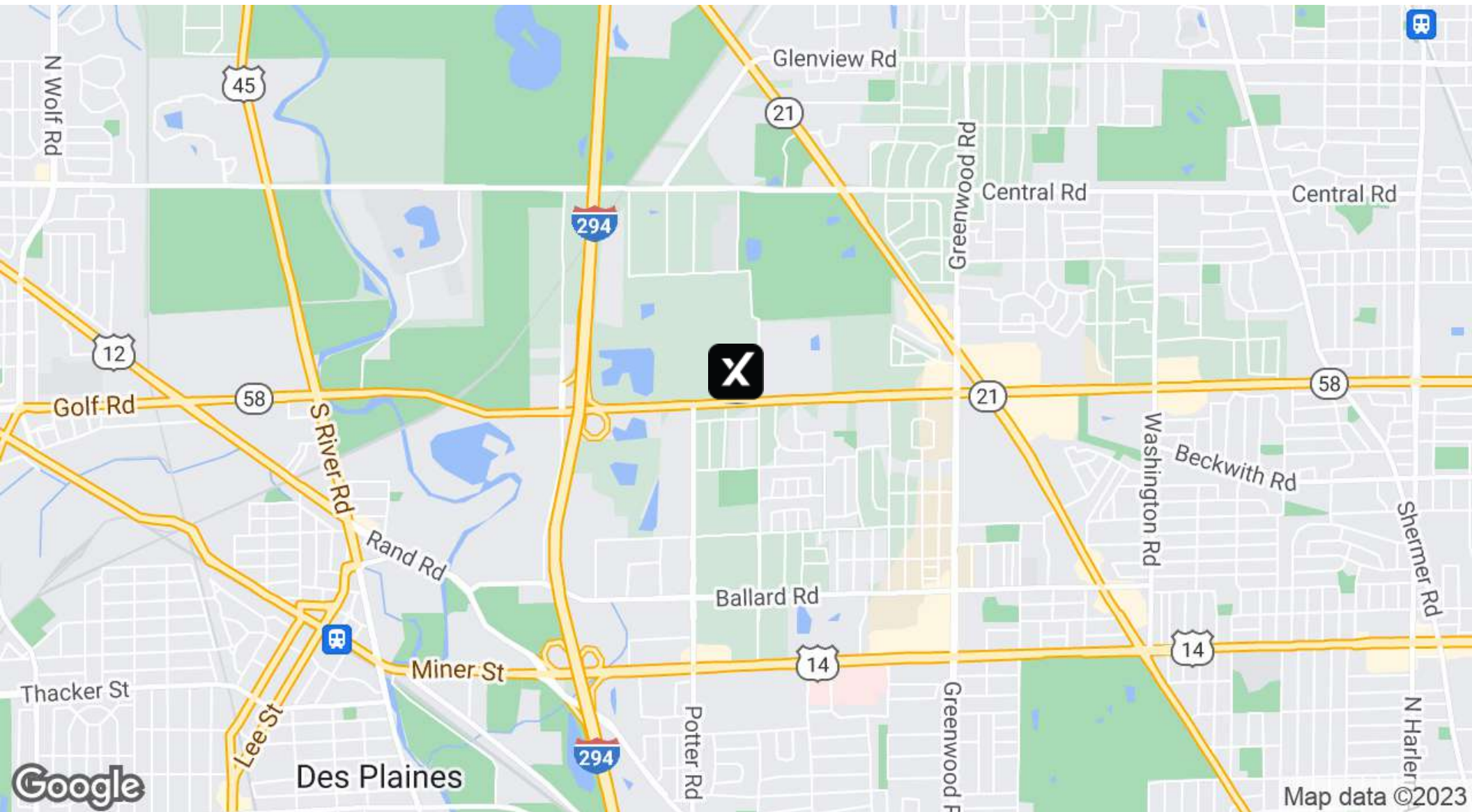
randolph.taylor@expcommercial.com



eXp Commercial, LLC, its direct and indirect parents and their subsidiaries (together, "We") obtained the information above from sources believed to be reliable, however, We have not verified its accuracy and make no guarantee, warranty or representation, expressed or implied, about such information. The information contained above is submitted subject to the possibility of errors, omissions, price changes, rental or other conditions, prior sale, lease or financing, or withdrawal without notice. Any projections, opinions, assumptions or estimates of the information contained above or provided in connection therewith, either expressed or implied, are for example only, and they may not represent current or future performance of the subject property. You, together with your tax and legal advisors, should conduct your own thorough investigation of the subject property and potential investment.

# FOR LEASE | Golf Sumac Medical Offices

9301 West Golf Rd, Des Plaines, IL 60016



Randolph Taylor MBA, CCIM

630.474.6441

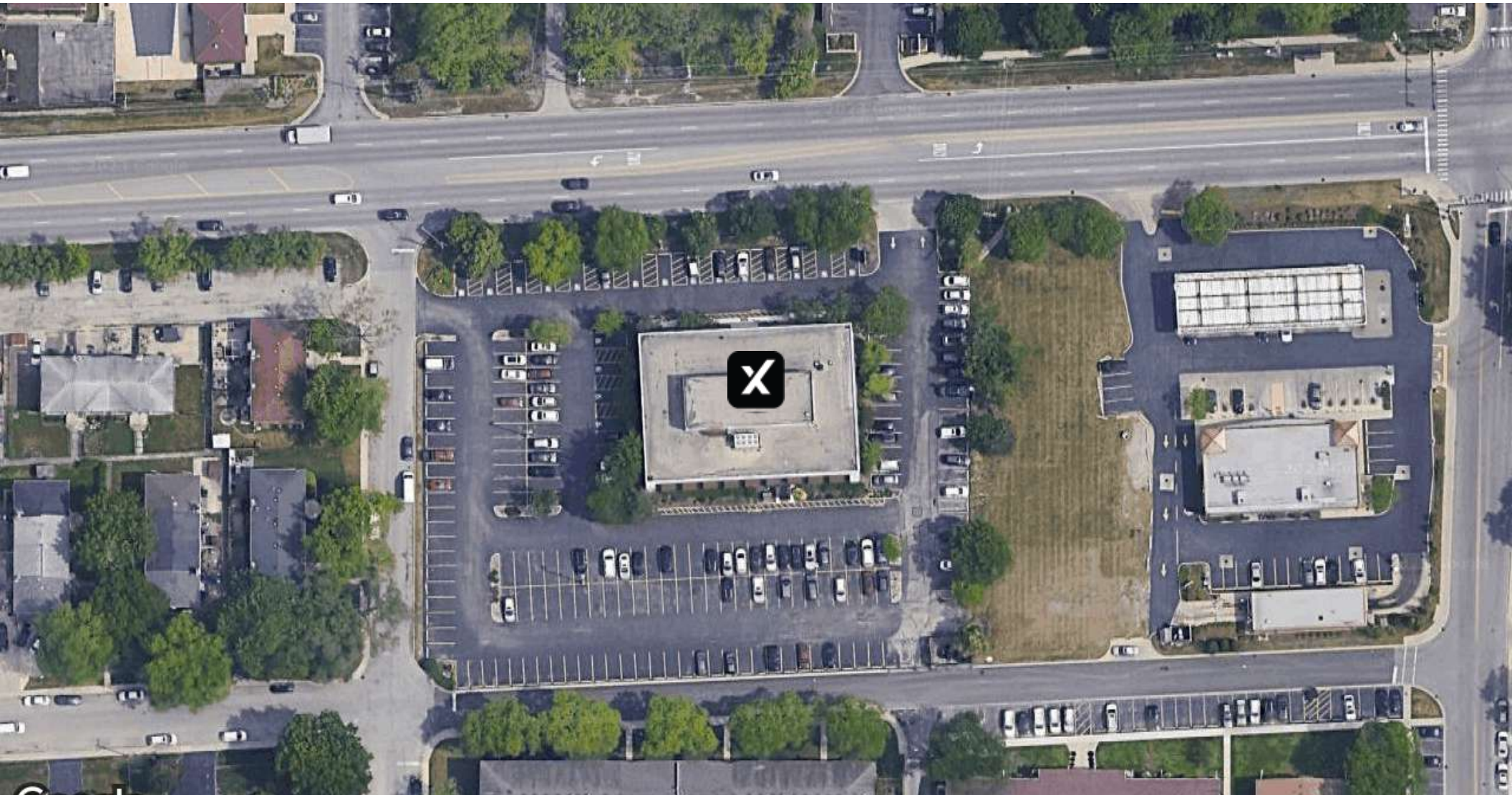
randolph.taylor@expcommercial.com



eXp Commercial, LLC, its direct and indirect parents and their subsidiaries (together, "We") obtained the information above from sources believed to be reliable, however, We have not verified its accuracy and make no guarantee, warranty or representation, expressed or implied, about such information. The information contained above is submitted subject to the possibility of errors, omissions, price changes, rental or other conditions, prior sale, lease or financing, or withdrawal without notice. Any projections, opinions, assumptions or estimates of the information contained above or provided in connection therewith, either expressed or implied, are for example only, and they may not represent current or future performance of the subject property. You, together with your tax and legal advisors, should conduct your own thorough investigation of the subject property and potential investment.

# FOR LEASE | Golf Sumac Medical Offices

9301 West Golf Rd, Des Plaines, IL 60016



Imagery ©2023 CNES / Airbus, Maxar Technologies, Sanborn, U.S. Geological Survey, USDA/FPAC/GEO

**Randolph Taylor MBA, CCIM**

630.474.6441

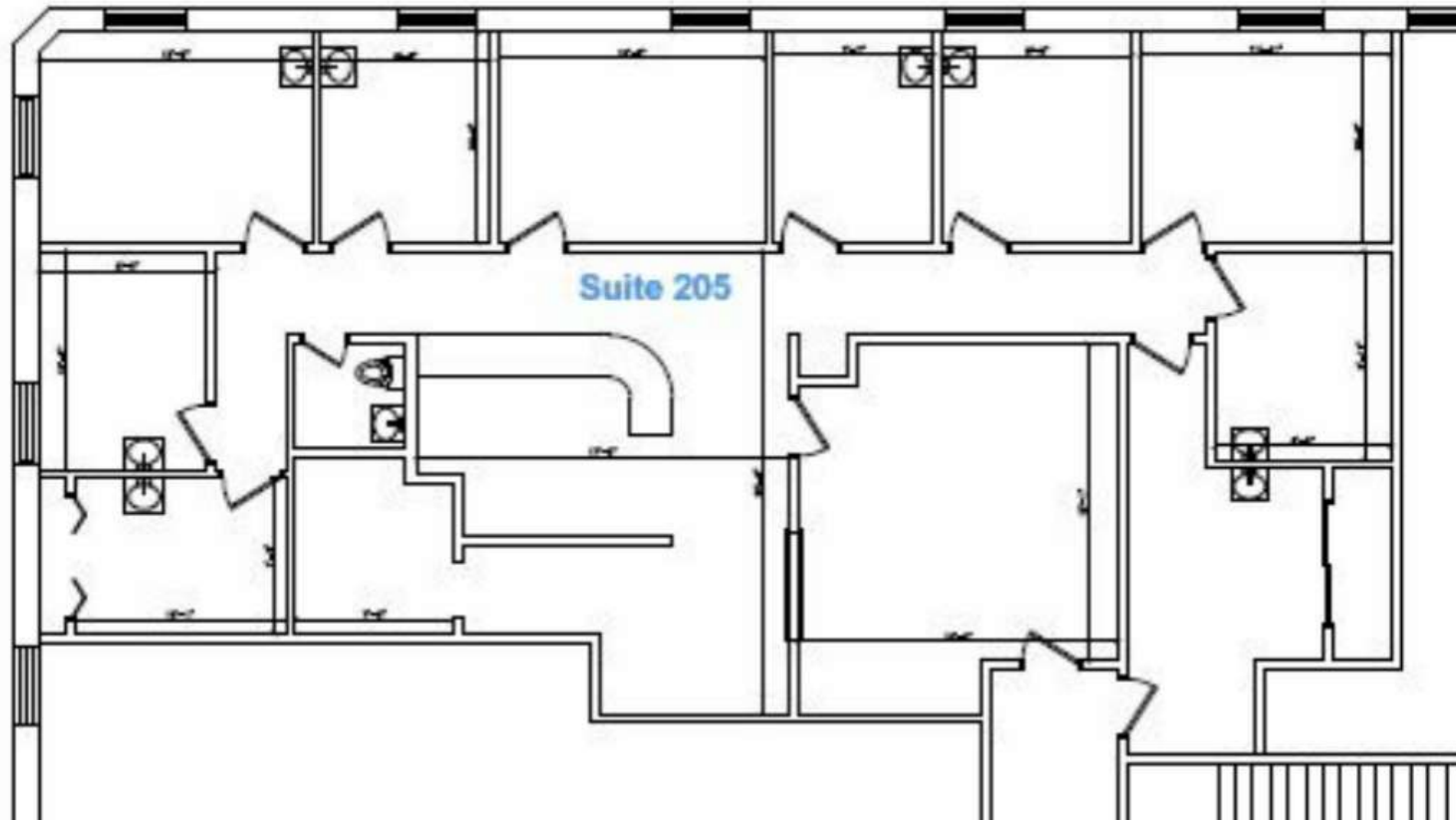
[randolph.taylor@expcommercial.com](mailto:randolph.taylor@expcommercial.com)

**exp**<sup>TM</sup>  
COMMERCIAL

eXp Commercial, LLC, its direct and indirect parents and their subsidiaries (together, "We") obtained the information above from sources believed to be reliable, however, We have not verified its accuracy and make no guarantee, warranty or representation, expressed or implied, about such information. The information contained above is submitted subject to the possibility of errors, omissions, price changes, rental or other conditions, prior sale, lease or financing, or withdrawal without notice. Any projections, opinions, assumptions or estimates of the information contained above or provided in connection therewith, either expressed or implied, are for example only, and they may not represent current or future performance of the subject property. You, together with your tax and legal advisors, should conduct your own thorough investigation of the subject property and potential investment.

# FOR LEASE | Golf Sumac Medical Offices

9301 West Golf Rd, Des Plaines, IL 60016



**Randolph Taylor MBA, CCIM**

630.474.6441

[randolph.taylor@expcommercial.com](mailto:randolph.taylor@expcommercial.com)





# FOR LEASE | Golf Sumac Medical Offices

9301 West Golf Rd, Des Plaines, IL 60016



**Randolph Taylor MBA, CCIM**

630.474.6441

[randolph.taylor@expcommercial.com](mailto:randolph.taylor@expcommercial.com)



eXp Commercial, LLC, its direct and indirect parents and their subsidiaries (together, "We") obtained the information above from sources believed to be reliable, however, We have not verified its accuracy and make no guarantee, warranty or representation, expressed or implied, about such information. The information contained above is submitted subject to the possibility of errors, omissions, price changes, rental or other conditions, prior sale, lease or financing, or withdrawal without notice. Any projections, opinions, assumptions or estimates of the information contained above or provided in connection therewith, either expressed or implied, are for example only, and they may not represent current or future performance of the subject property. You, together with your tax and legal advisors, should conduct your own thorough investigation of the subject property and potential investment.



# FOR LEASE | Golf Sumac Medical Offices

9301 West Golf Rd, Des Plaines, IL 60016



**Randolph Taylor MBA, CCIM**

randolph.taylor@expcommercial.com

Direct: **630.474.6441**

IL #475.142701

## Education

MBA - Finance/Real Estate

## Memberships

CCIM, NICAR, NAR, IAR

**eXp Commercial**  
939 W North Ave #750  
Chicago, IL 60642

**Randolph Taylor MBA, CCIM**

630.474.6441

randolph.taylor@expcommercial.com

